

With air comes water

The powerful CPAW12 air and water purging system for all sizes industrial NH3 systems

The very powerful CPAW12 air and water Purging system can handle all sizes of Industrial NH3 refrigeration systems and ensure no air, water and other impurities are left in the system.

You will only need one CPAW12 no matter the size and running conditions of the refrigeration system.

Savings approx. (“rules of thumb”):

Each 1°C higher CT because of air: power consumption rises 3% and refrigeration capacity drops 1%

Each 1 % water in the evaporator means 1 % lower capacity and 2 % higher power consumption

Keeping air and water out of the system reduces oil decomposition and chemical reactions thus reducing service and maintenance cost.

Capacities CPAW12 system approx. :

Fouled gas condensing capacity: 12 kW

Air out blow capacity approx.: 50 liters/min. to 150 liters/min. (Depending on condensing pressure)

Evaporating capacity for water removal 12 kW



Water drainage capacity when full approx. 14 liters

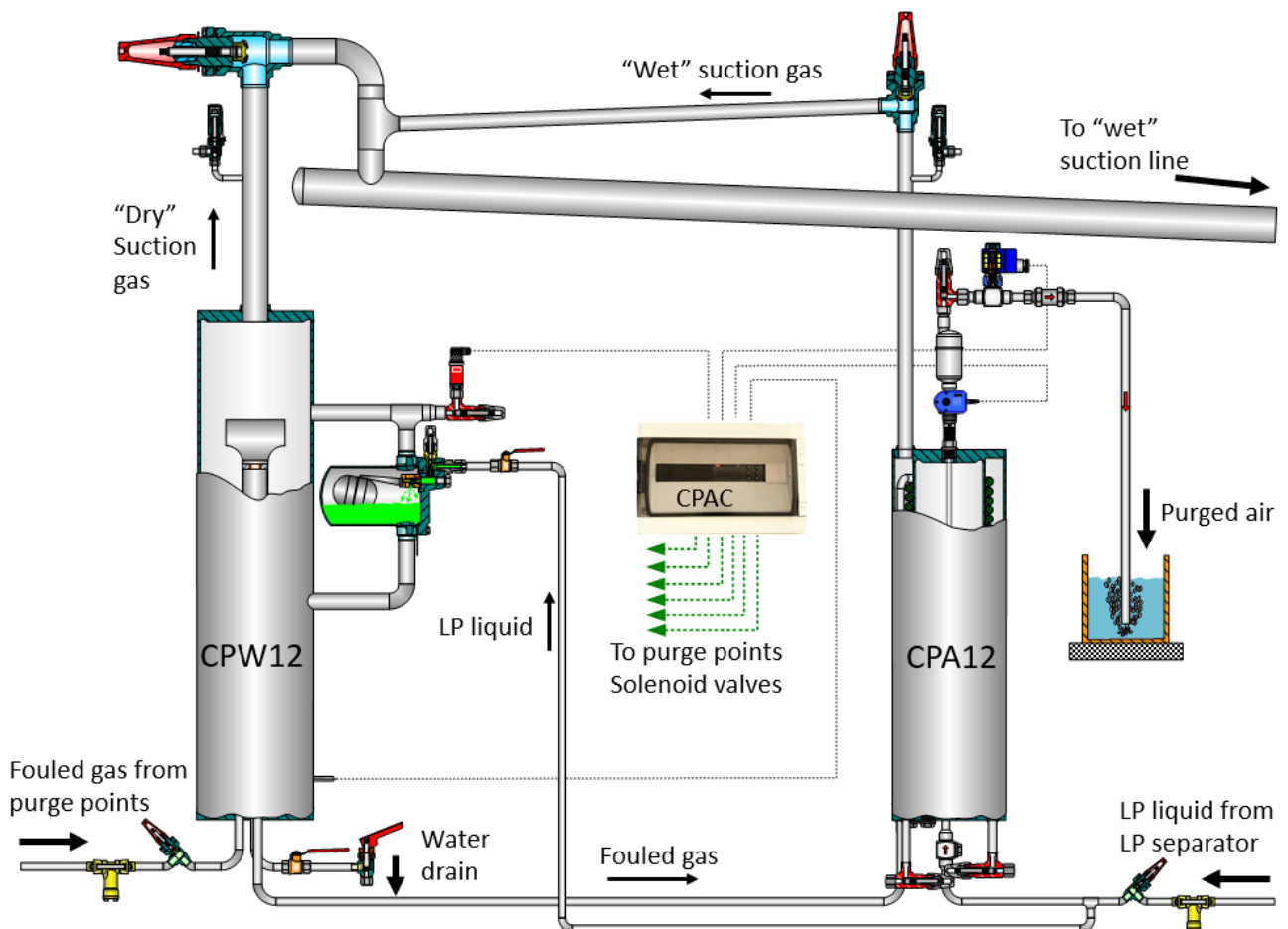
Further advantages:

Amount of purged air can be determined from purge timer and capacity table

Warning signals when ready for pump down and water drainage from the CPAC control box.

Relation between air and water content in the system becomes visible.

Low installation cost as CPA12 and CPW12 can use same connections to system.





CPAC Controller showing high water content in CPW12. Water draining necessary.



CPW ready to drain for water and sludge separated from system.

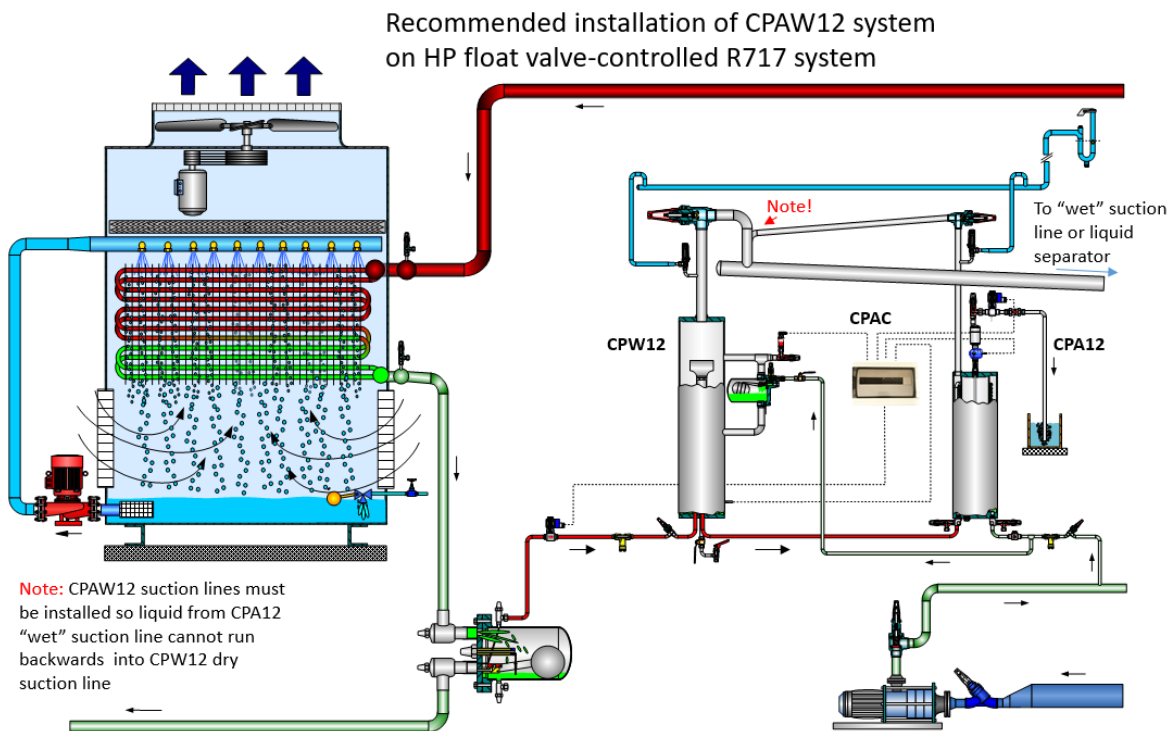
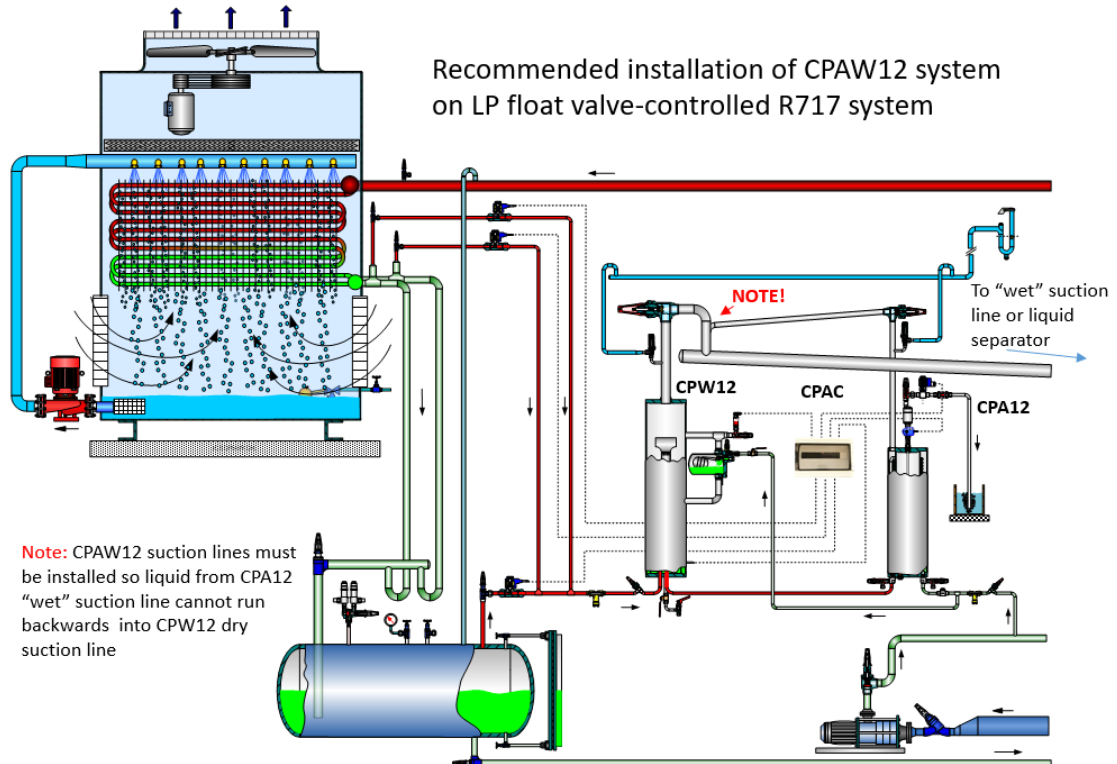


Water and sludge are drained from CPW12



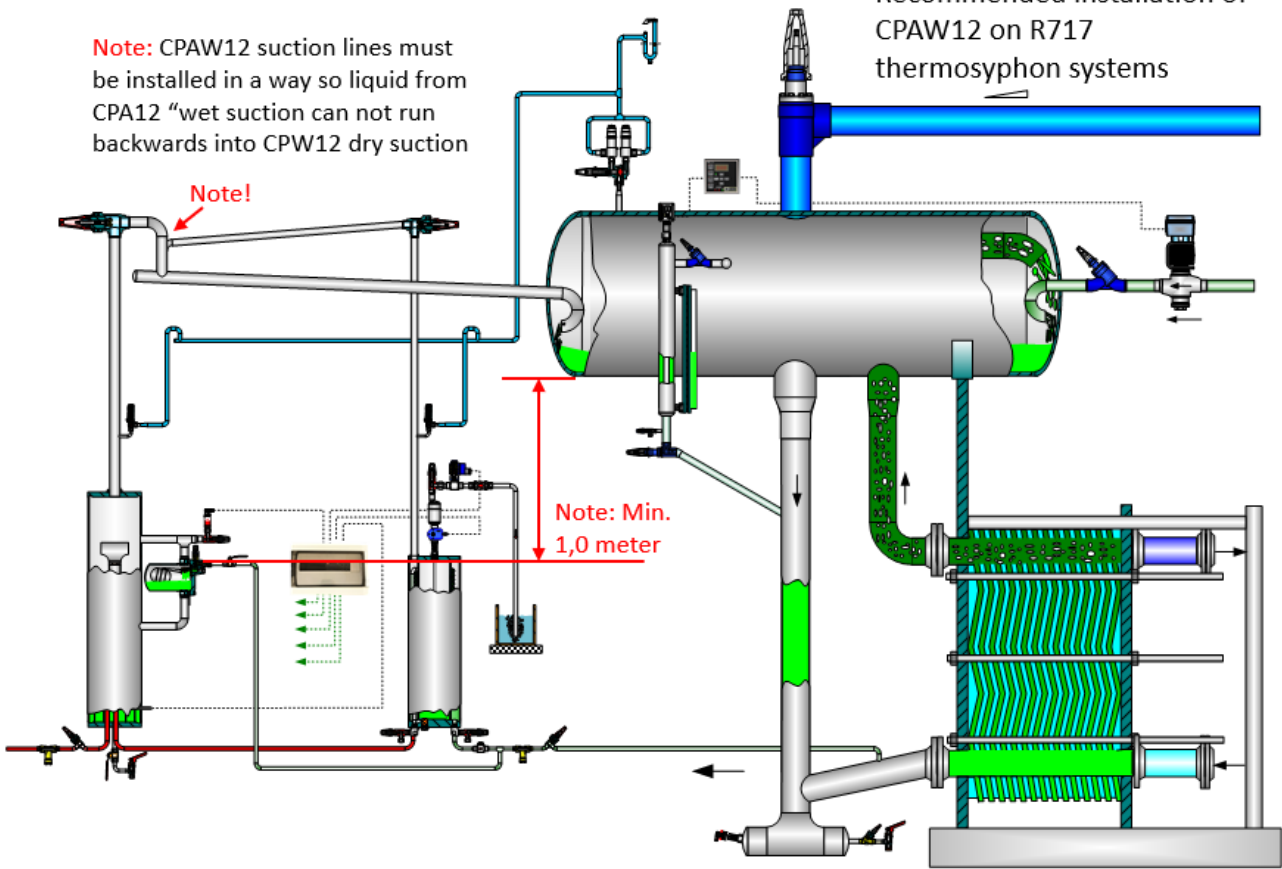
CPAW12 system is back in operation after draining.

Recommended connections CPAW12



Note: CPAW12 suction lines must be installed in a way so liquid from CPA12 "wet suction" can not run backwards into CPW12 dry suction

Recommended installation of CPAW12 on R717 thermosyphon systems



CPAW12 system on R717 one stage system with CPO

